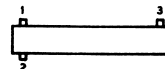
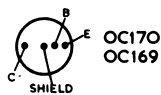
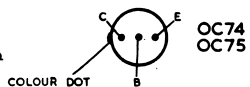


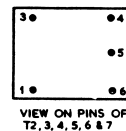
VOLTAGE READINGS SHOWN HERE ARE WITH RESPECT TO CHASSIS AS READ ON 20,000  $\Omega$ /VOLT METER WITH ZERO SIGNAL & TUNING CAPACITOR FULLY CLOSED.

NO SIGNAL BATTERY DRAIN 12mA

NOTE: ON SOME EARLY RECEIVERS R27 WAS 4.7  $\Omega$



LOOPSTICK  
VIEW ON TAGS



VIEW ON PINS OF  
T2, 3, 4, 5, 6 & 7

CIRCUIT DIAGRAM J6